



**Surrey Police
presentation to the
Local Committee for Woking**

19 March 2003

**Surrey Police
And
North West Surrey Division**

Policing in Surrey on the North West Surrey Division

The purpose of this report is to give the County Council representatives an overview of the policing structure for Surrey Police with particular reference to North West Surrey Division. I will begin with an overview of the divisional police structure. I will then go on to outline the National Intelligence Model which we, as a force, work towards being intelligence led. Next, I will outline our divisional priorities including some specific targets for the Woking Borough area. Finally I will outline how we deal with reassurance throughout the division giving examples of initiatives we in Woking have done.

Divisional Structures.

Surrey Police consists of four divisions as outlined below in *fig 1*.



The North West Surrey Division consists of three Borough areas Surrey Heath, Runnymede and Woking. The policing boundaries of the boroughs are coterminous to those of the local authority. The divisional personnel structure is identical across the force area and is represented at *fig 2* below for North West Surrey Division.

North West Surrey

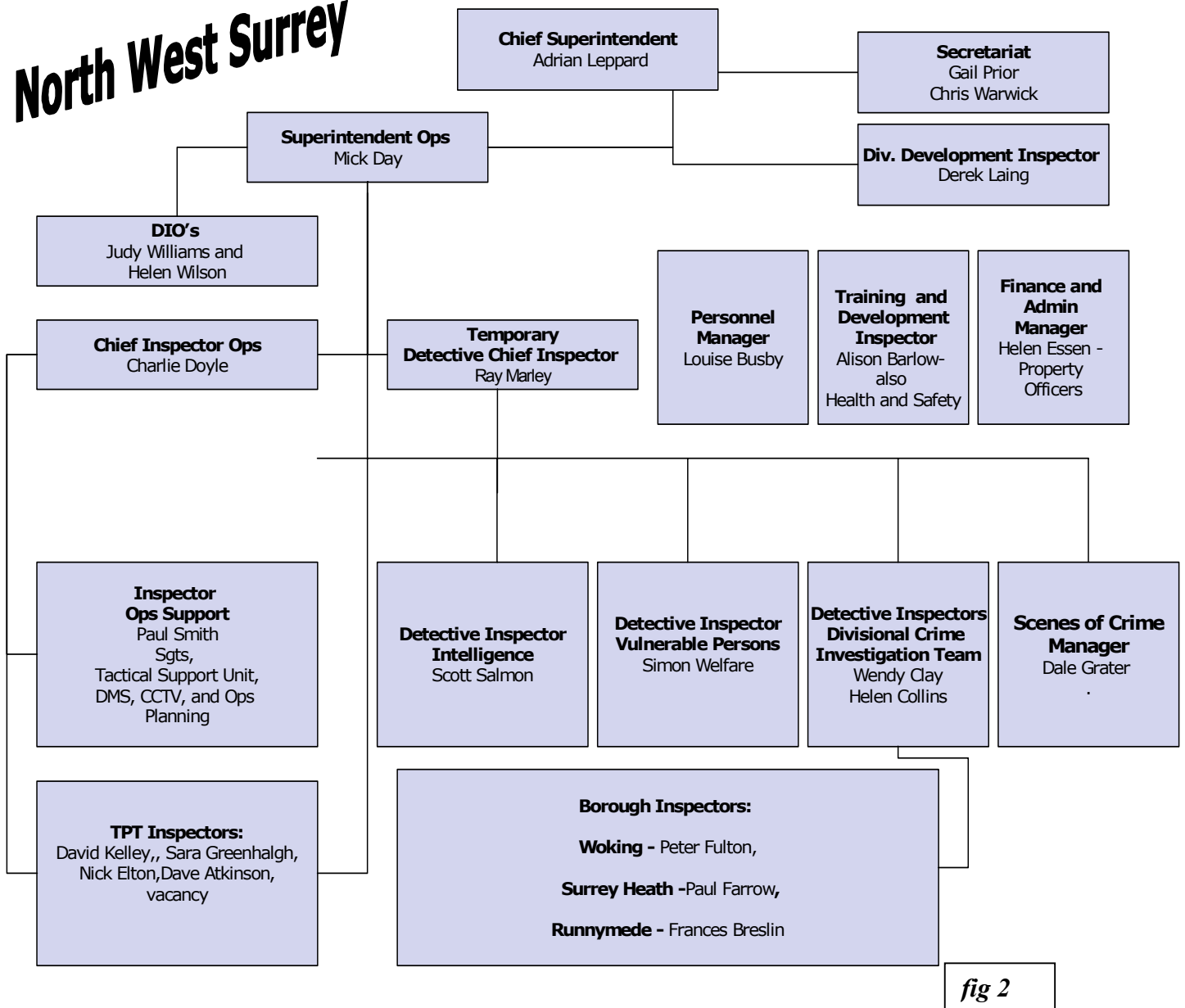


fig 2

National Intelligence Model.

Surrey Police as a force were one of the first to introduce the National Intelligence Model (NIM) as the main focus for our work. The principles of this model are that everything we do is ‘intelligence led.’ It seeks to standardise the management and analysis of information to target business activity.

On North West Surrey Division we are seeking to take this process one step further through the ‘Borough Intelligence Model.’ This model seeks to expand the NIM operating platform into a multi-agency domain, specifically focused on what we term Level 1 (Local) issues. The process will enable agency partners to prioritise their common business interests (e.g. managing the cause and effects of crime and disorder) and to jointly allocate resources to ensure maximum impact upon organisational priorities. This process will ensure community safety and reassurance, crime and disorder are all dealt with as effectively as possible by all involved.

Divisional Priorities

Currently there are four 'crime' priorities that we focus our efforts on.

- Dwelling Burglary
- Violent Crime
- Motor Vehicle Crime
- Class 'A' Drugs offences

The overarching theme for the division is reassurance. This encompasses three main focus areas

- Signal Crimes – serious crimes or crimes with an impact on the community.
- Social Disorder – anti social behaviour
- Physical Disorder – damage, graffiti, etc.

At Woking Borough we are set specific priorities, currently on a three monthly basis. This process ensures that the targets are in line with the current issues for the borough. The targets are set after looking at the performance in the key areas mentioned above.

Woking has only had an increase of crime in the current financial year to date of 1.5%. Contrasted with similar boroughs throughout the country it shows that we are doing some excellent work in crime reduction as other force areas are reporting increases in excess of 20% for total crime.

Currently Woking Borough has the highest detection rate for the offence of robbery in the force area. As a result of a trend in October 2002 a dedicated unit was set up to improve the detection rate of these offences and bring the offenders to justice. This proved successful and the incidence of robbery offences has been greatly reduced in the borough area.

While Surrey Police is leading the way in reducing crime we are now focusing on the detection of crime much closer. In April 2003 we are due to shift to a system which will put greater emphasis on detecting crime while still holding on to our reduction of crime success.

Reassurance

As part of the Surrey Police structure we have 'listened' to the public and put in place several Neighbourhood Specialist officers (NSO's) or beat officers around the force area. These officers have been extremely well received and are completing some excellent problem solving work in the communities which they work. In the Woking Borough area I have seven such officers. From March 2003 we will, as part of a government initiative, have a further six Police Community Support Officers (PCSO's) working for us across the borough. These officers have been located with one of the NSO's to create a problem solving team. The NSO's are police officers with all the skills and powers that this brings for dealing with anti social behaviour, problem solving and disorder in the area. The PCSO's are predominantly patrol officers giving reassurance and advice to the community and assisting the NSO in problem solving activity.

Examples of reassurance and problem solving activity include

- NSO officers holding surgeries in the local community.
- Community impact assessments being completed after serious incidents to draw up action plans for Police, Local Authority and County Council.
- CCTV Woking, expansion of system
- Automatic Number Plate reader ensuring vehicles of interest to police are highlighted.
- Mobile CCTV vehicle deployable to areas where antisocial behaviour is a problem
- Use of legislation to prevent alcohol consumption in designated areas where disorder is alcohol related.
- Working with the Local Authority in designing out crime eg. Removal of seats where youths gather and cause nuisance, improvement of lighting in areas where people feel vulnerable.

There are many other activities that take place around this subject however the above is typical of the work we carry out on a daily basis.

Peter J. Fulton BSc(hons)

Inspector Woking Borough